



Township of Maple Shade

COMMUNITY FORESTRY MANAGEMENT PLAN

An Action Plan for Community Forestry
2016-2020

In Cooperation with:
New Jersey Forest Service-Community Forestry

Prepared by: Township of Maple Shade Green Team
Assisted by: William F. Brash Jr.,
NJ Certified Tree Expert, CTE #375
NJ Approved Consulting Forester

Table of Contents

Table of Contents	2
Community Information Form	3
Introduction	4
Existing Forestry Management	4
Mission Statement	4
Goals and Objectives	4-5
Tree Risk Assessment and Liability Statement	6
Community Overview	7-8
Community Forestry Program Administration.....	9-12
Community Map	13
Training and Professional Development.....	14
Public Education, Awareness and Outreach	14-15
Statement of Shade Tree Budget	15-16
Statement of Plan Implementation	17
Sustainable New Jersey Tree Canopy Goal	18
Community Stewardship Incentive Program (CSIP)	19
<u>APPENDICES</u>	
Appendix A Shade Tree Ordinance	21-24
Appendix B Tree Work Request Form	25

Green Team Members

- ◆ Chuck Kauffman
- ◆ Heather Talarico
- ◆ Jenn Lucas
- ◆ Ellen McDowell
- ◆ Justin Bennett
- ◆ Lou Manchello
- ◆ Joe Andl
- ◆ Kevin Rijs
- ◆ Paul Cray
- ◆ Debra Klein
- ◆ Linda Marryott Wiest
- ◆ Rick Winter



Community Forestry Management Plan

Municipal/County Information Form

Municipality: Maple Shade Township

County: Burlington

Address: Township of Maple Shade
200 Stiles Avenue
Maple Shade, NJ 08052

Contact Name and Title: Joe Andl, Township Manager

Phone #: 856.779.9610, Ext.161, E-mail: jandle@mapleshade.com

Fax # and E-mail: 856.779.2524

Organization Name: Township of Maple Shade Green Team

Mayor/County Freeholder's Signature: Lewis A. Markello, Mayor

Date of Management Plan Submission: March 2016

Time Period Covered in Management Plan: 2016-2020

Community Stewardship
Incentive Program (CSIP)
Practices Identified in
Management Plan

- CSIP #1 Training
- CSIP #2 Community Forestry Ordinance Establishment
- CSIP #3 Public Education and Awareness
- CSIP #4 Arbor Day
- CSIP #5 Tree Inventory
- CSIP #6 Hazard Tree Assessment
- CSIP #7 Storm Damage Assessment
- CSIP #8 Tree Maintenance and Removals
- CSIP #9 Insect and Disease Management
- CSIP #10 Wildfire Protection
- CSIP #11 Tree Planting
- CSIP #12 Tree Recycling
- CSIP #13 Sidewalk Maintenance Problem
- CSIP #14 Stormwater Management
- CSIP #15 Other

**Official Use Only
Certification**

The above named municipality/county has made formal application to the New Jersey Forest Service. I am pleased to advise you that after our review, the NJ Forest Service has concluded that this plan meets the standards set forth by the State and the NJ Community Forestry Council and is approved for the period covered.

Signed _____
State Forester

Approved date _____

INTRODUCTION

It is the intent of this first 5-year Community Forestry Management Plan to continue management and enhancement of the community forest resource within the confines of the public right-of-ways, parks and community at large.

The goals and objectives for this the first plan developed by Maple Shade Township are developed to address the current community forest needs of Maple Shade Township.

MISSION STATEMENT

The Township of Maple Shade, Green Team (GT) shall act to maintain and grow the Community Forest as a sustainable, productive living resource that enhances the community's aesthetics and environment, as well as the physical health, social well being and economic quality of township residents and their properties.

The Green Team shall advise the governing body, municipal staff and residents with respect to the care, maintenance, and planting of community forest trees.

The Green Team shall develop a Community Forestry Management Plan to guide their actions. The Green Team shall establish appropriate policies and procedures and implement appropriate rules, regulations and actions necessary to uphold its mission.

GOALS AND OBJECTIVES (2016-2020)

1. Review the Township's tree related ordinances. (2016)

- ◆ Review the ordinance involving a homeowners responsibility for trees within the Right-of-way. (ROW)
- ◆ Review the remainder of the municipal ordinances that relate to trees.
- ◆ Seek clarification in the ordinance regarding the ROW and tree replacement

2. Increase the forest canopy and maintain the community forest resource. (2016-2020)

- ◆ Explore the uses for the established *Tree Compensation Fund*. (2017)
- ◆ Diversify the tree plantings and species composition.
- ◆ Establish a fruit tree grove on Municipal Open Space.
- ◆ Identify and raise awareness of any threats in a timely manner (insects, disease, invasives) and take all actions possible.

3. Strengthen the presence of the Green Team on the Municipal website. (2016)

- ◆ Post the ordinance in a prominent location on the Township website.
- ◆ Link appropriate factsheets and educational articles to the Township's website.

4. Improve communication between the Township tree related activities and the Green Team. (2016-2020)

- ◆ Request the Green Team be informed whenever a tree is being removed/pruned by a homeowner in the ROW.
- ◆ Develop a closer relationship with DPW and Community Development.



Maple Shade Township has an extensive Parks and Recreation Program.



5. Increase Community Outreach. (2016-2020)

- ◆ Educate homeowners on the benefits of trees
- ◆ Provide a stronger presence to the Township Schools.

6. Initiate a Township wide tree risk assessment as part of an I-tree inventory (2016-2020)

- ◆ Complete an ITree inventory for Maple Shade
- ◆ Include a tree risk assessment as part of that ITree inventory.
- ◆ Establish a priority treatment plan to reduce risk
- ◆ Determine the effectiveness of whole program.
- ◆ Write a CSIP grant for the inventory and risk assessment.



Steinhauer Pond—Maple Shade, NJ



TREE RISK ASSESSMENT AND LIABILITY STATEMENT

Community Forest and street trees provide numerous aesthetic, environmental and economic benefits and are a major asset to the community. All trees will inevitably mature and require care, maintenance and eventual replacement. The community forest can impose dramatic costs upon a community if not properly managed. Care and maintenance, in addition to planting "the right tree in the right place," can help insure that community trees not only contribute to the aesthetic, environmental and economic vitality of the area, but also reduce the potential risks to public safety and costs to the community.

Decision-making without the benefit of information will lead to the inefficient expenditure of community efforts and funds. Therefore it is the intent of this plan to focus available resources on the greatest need and procedurally work towards the creation and maintenance of a healthy forest, which will result in commensurate reductions in risk to public safety and a focused expenditure of time and money. However, the community must work within a reasonable budget that most likely will not be able to immediately meet each and every need of the community forest.

The objectives established in this plan and the appropriate promotion will help garner public support for implementation of the plan by providing demonstrative long-term benefits to the environment and public safety.

The Green Team intends to promote proactive management of the community forest resource. By establishing procedures to review tree requests and to inventory the community forest, including risk assessment, the Green Team shall recommend and attempt to implement corrective action prior to structural tree failure and other hazardous tree related conditions. It should be acknowledged that not all hazardous conditions can be detected or predicted. Proper planning, maintenance and care should reduce the probability of property damage or inconvenience, but unexpected events will still occur.

Implementing this plan will demonstrate the Township of Maple Shade is devoting reasonable levels of resources in a planned and focused manner to reduce tree related accidents and thereby reduce exposure to liabilities and promote public safety.



Main Street, Maple Shade, NJ
Circa 1950

Township of Maple Shade is a community in Burlington County of 3.8 square miles and a population of 19,131 according to the 2010 US Census. Main Street was in need of trees as far back as the 1950's



COMMUNITY OVERVIEW

Maple Shade Township is located in Burlington County New Jersey, United States. What is now Maple Shade was originally formed as Chester Township on November 6, 1688. Chester was incorporated as one of New Jersey's initial 104 townships by an Act of the New Jersey Legislature on February 21, 1798. The name was changed to Maple Shade township as of November 6, 1945, based on the results of a referendum passed that same day.

According to the United States Census Bureau, the township has a total area of 3.8 square miles of all of its land. The 2010 United States Census shows the following facts about Maple Shade Township;

- ◆ 19,131 total
- ◆ 8,525 households
- ◆ 4,658 families

Government

Maple Shade Township operates under the Faulkner Act (Council-Manager) form of municipal government. The township is governed by a five-member Township Council, whose members are elected at-large in partisan elections to serve four-year terms of office on a staggered basis. At a reorganization meeting after each election, the Council selects one of its members to serve as Mayor and another as Deputy Mayor.

The current Maple Shade Council is Mayor Lou Manchello, Deputy Mayor Nelson Wiest, Councilperson Charles Kauffman, Councilperson Rob Wells, and Councilperson Claire Volpe.

Maple Shade Township is in the First Congressional District and is part of New Jersey's 6th Legislative District, due to 2010 census results redistricting.

Education

The Maple Shade School District serves public school students in kindergarten through twelfth grade.

Existing Resources

The Township resource has not changed significantly except for an increase in diversity as mature trees age and are removed. These mature, rather homogeneous street trees are being replaced with a more diverse selection of the "right tree in the right place."

The Municipal Master Plan - developed by the Maple Shade Township Planning Board in 1990 and then updated by Alaimo Associates in 2006 has set forth goals and objectives of the community and had amendments that were adopted by the Township Council in April of 2006. Additions to the Master Plan during the current review in 2016 by referencing this plan and the resource goals that are part of this CFMP have been completed. The Green Team as put forth in this management plan will support, promote and help implement all of these goals as established by the Township of Maple Shade in the Municipal Master Plan.

The Township of Maple Shade has not adopted a formal Open Space Plan; this CFMP will promote the goals of the Green Acres action to maintain Township open space for the benefit of the community.

The completion of this management plan will hopefully provide a stimulus for maintenance and enhancement of street tree plantings and improved the physical condition and aesthetics of the neighborhoods. It should also encourage and promote growth in the business community and enhanced the community forest and recreational opportunities in the Township parks and open space areas.

The analysis of the community forest resulting from this the first Maple Shade 5-year plan will be used to establish priorities for the resulting care and steps taken to improve the resource.



Tree Inventory and Tree Risk Assessment

The public tree resource in Maple Shade Township is estimated to contain 3873 trees. With approximately 42 + miles of road within the Township the street tree resource can be estimated using the following calculation.

42.65 miles of municipal roads within the Township X 2 (each side of the road) = 85 miles of streetscape.

42.65 miles X 5280'/mile = 450,384 feet of streetscape

450,384/ 50' planting distance = 9007 possible streetscape planting sites

5280 x .43 (adjustment factor for driveways, sight triangles, lampposts, mortality intersections border street, etc)

Estimated street tree resource is 3873 trees

Storm Damage Assessment

As a result of Super-Storm Sandy, and to prepare for any future damage, Maple Shade Township sustained significant damage to its public tree resources. As a result of that damage the Township will pursue the use of i-Tree's storm damage assessment protocols to comply with FEMA pre-disaster planning requirements. The Township will seek CSIP or other grant funding to begin planning for the next hurricane.

Wildfire Protection

Maple Shade Township is outside the Pinelands extreme fuel hazard vegetation zones and the extreme fire risk areas. The Township no longer has large areas of vegetation with high to extreme fuel rating. Wildfire Protection is not a priority in this 5-year management plan.

Sidewalk Maintenance Problems

Maple Shade Township like any municipality has tree and sidewalk conflicts. Maple Shade Township currently has a sidewalk replacement/maintenance program and wishes to increase the effectiveness of that program and reduce the number of conflicts that arise from tree/root conflicts. The list of approved tree species will take into account the soil volume associated with the planting strip between curb and sidewalk and will utilize the recommendations from *Trees for New Jersey's Streets*, published by the NJ Shade Tree Federation. Planting the right tree in the right spot will help Maple Shade Township reduce the tree sidewalk conflict in this next 5-year management plan.

Stormwater Management

Stormwater management is becoming increasingly more important for Maple Shade Township however the 35 % tree cover does help to mitigate stormwater runoff and it is an objective to increase the existing tree cover percentage thus increasing the stormwater management benefits derived from an increase in the tree canopy.



COMMUNITY FORESTRY PROGRAM ADMINISTRATION

The Township of Maple Shade's 5-member, Council operates under the Faulkner Act or Council-Manager form of Government. Council members serve 4-year staggered terms. The Council is elected at large with the Mayor elected among the council members. The Council sets policy for the municipality. The Mayor presides over the Council and, as a member has a voice and a vote in the proceedings.

The Office of the Manager is the focal point of the administrative operation. The Manager is the chief executive and administrative official of the Township. The Township Manager serves at the pleasure of the Mayor and Council and presides over the day to day operation of the municipality. The powers and duties of the Township Manager are prescribed by State Statute and municipal ordinance. Responsibilities of the manager include:

- ◆ Implementation of the policies established by the Mayor and Council.
- ◆ Preparation and submittal of the Municipal budget for the Mayor and Councils consideration.
- ◆ Preparation and submittal of the annual report.
- ◆ Personnel administration for all Departments from hiring to departure.
- ◆ Administration and supervision of all departments.
- ◆ Administration of purchasing.
- ◆ Preparation and negotiation of contracts for consideration by the Mayor and Council.
- ◆ Respond to requests and concerns from citizens and municipal staff.
- ◆ Appointment of citizens to serve as volunteers on certain boards, commissions or committees.
- ◆ Participation in the preparation of the Council agendas and attendance and participation at Council meetings.
- ◆ Liaison to various outside government agencies.

The Township Managers staff consists of an Administrative Assistant. Staff Responsibilities include:

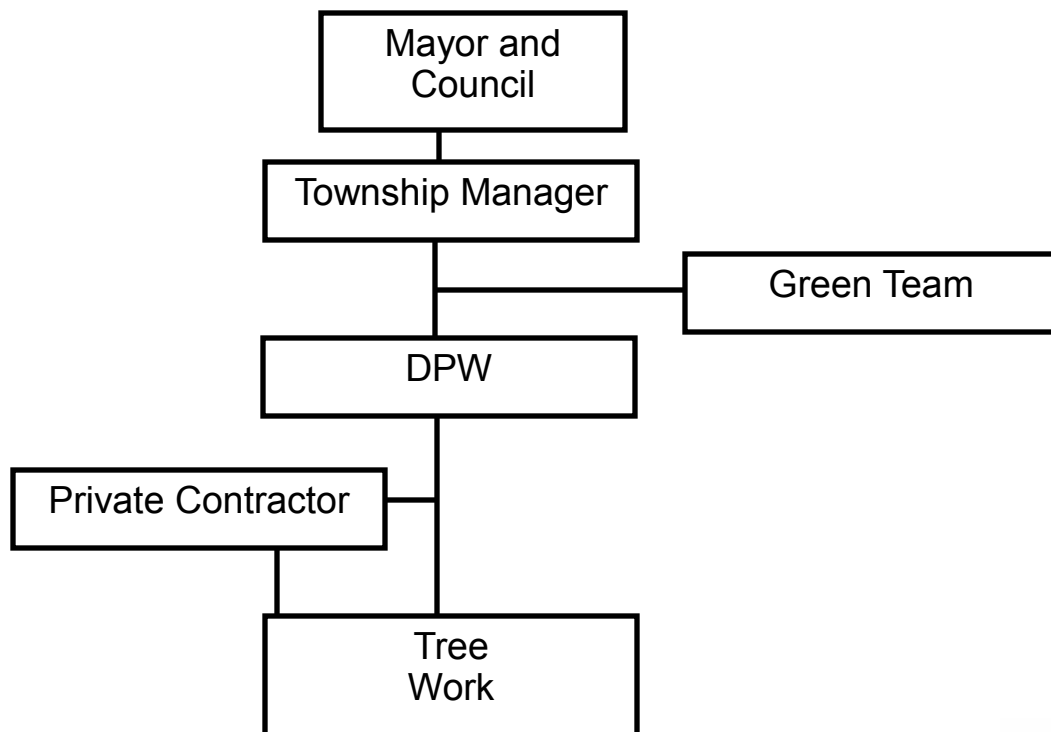
- ◆ Responding to public requests and concerns.
- ◆ Maintenance of Municipal computer systems.
- ◆ Maintenance of the telecommunication system.
- ◆ Administration of the Municipal website.
- ◆ Purchasing and maintenance of all office equipment.
- ◆ Purchasing of Office supplies.
- ◆ Maintenance of the Municipal filing system.
- ◆ Coordination of the Municipal Safety Committee.

The Department of Public Works (DPW) is responsible for the following:

- ◆ The DPW is responsible for the day to day management of the tree resource.
- ◆ Maintenance of parks and public buildings.
- ◆ Maintaining the Township streets.
- ◆ Maintenance of the Township storm drainage system.
- ◆ Snow removal



Maple Shade Township Community Forestry Program Administration Flow Chart



The Green Team (GT)

The Council and Manager of the Township of Maple Shade have established the GT as the group responsible for the management of the community forest. The Green Team consists of volunteer members appointed by the Township Manager to 5-year terms and are the organization “of record” listed on the Municipal Information Form. The ordinance establishing the GT establishes the powers of the Team for the Township of Maple Shade.

Meetings of the Green Team occur monthly on the first Wednesday of the month.

Core/CEU training accomplishments include 3 members of the GT having been CORE trained and attending the Shade Tree Federation Meeting to acquire CEU’s since 2011.

Tree Service Requests

The Township of Maple Shade processes and responds to resident and municipal tree service requests through the Department of Public Works. A “*request for tree examination*” form has been developed, a copy of which is attached in the appendix. Requests may be received by mail; phone call to the Municipal building; verbal communication with a GT member; or by direct observation by a member of the DPW..

Upon receipt of the request a member of the DPW will examine the tree. The DPW will determine if review by a Certified Tree Expert is needed. Based on the results of the examination the DPW will review the report and relative to the Townships’s policies determine the appropriate action to be taken.

DPW staff will remove fallen limbs but will not remove dead or dying trees. The resident or property owner will then be notified if a tree risk is present, including trees within the Right-of-Way (ROW) bordering a property. As stipulated in the Township ordinance, the resident must bear the cost of the tree work.

In the case of trees at public facilities and parks the Township hires a private contractor to perform tree maintenance tasks.



Shade tree management in the Township of Maple Shade is governed by the following ordinances

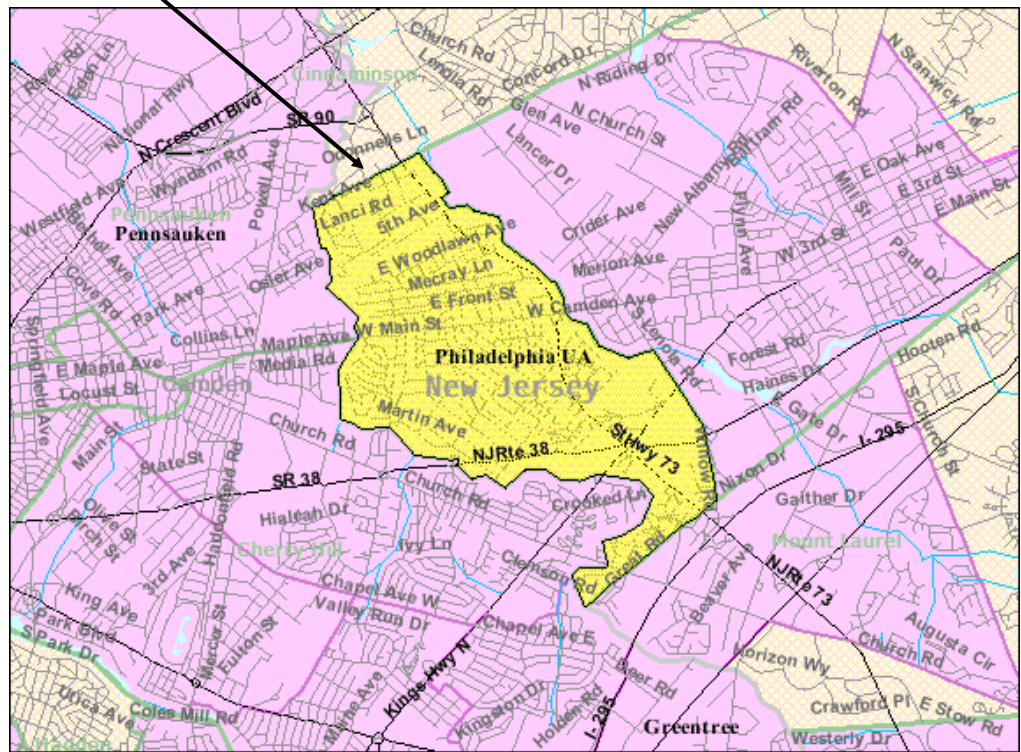
Adopted by the Township Council of the Township of Maple Shade 4-25-2013 by Ord. No. 2013-04.

Maple Shade Township is proud of its history of caring for the community and part of that responsibility is to care for the trees that shade our communities.

*Lou Manchello,
Mayor Maple Shade Township*

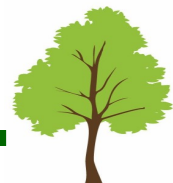


Community Map



Maple Shade Township has a legacy of caring for trees and will seek to become a Tree City USA during this 5-year planning period. We intend on improving on our legacy over the next 5 years.

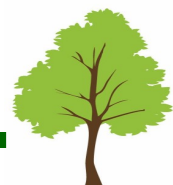
Lou Manchello, Mayor, Chairperson, Green Team



Community Aerial Photo



Maple Shade Township is 3.83 square miles yet still has 42.65 miles of Municipal Streets and a tree canopy cover of 25%. This makes Maple Shade's tree canopy cover 15% below the recommended amount of trees for our community. We believe this is a quality of life issue for our residents and we plan to increase our tree cover over the ten year period to help us breathe better, cool us on hot summer days and increase our quality of life.



TRAINING AND PROFESSIONAL DEVELOPMENT

One member of the Green Team and one member of the Township Public Works staff will complete the NJ Community Forestry CORE Training Program in the Fall of 2016. Other GT Members will be encouraged to attend as the budget allows. The Township supports this training through funding the registration costs.

Future training will focus on the technical needs of the Green Team to implement the Community Forestry Management Plan's (CFMP) goals and objectives. The ultimate goal is to have a Green Team and DPW staff 100% CORE trained and continue to build the capacity of the Shade Tree Program through training and networking opportunities.

Identified Training Needs

1. Tree identification (GT & DPW)
2. Tree risk assessment GT & DPW)
3. Proper species selection and planting site criteria
4. Proper planting techniques
5. Proper pruning procedures

PUBLIC EDUCATION, AWARENESS & OUTREACH

Tree City USA

The Township will pursue Tree City USA status for the first time in 2016. Tree City USA status will be annually publicized through Maple Shade Township press releases, website updates, notices and event sponsorship.

Arbor Day Celebrations

The Green Team conducts an annual Earth Day and Arbor Day program. In addition to a proclamation by the Mayor and Council, tree give-a-ways and contests are all conducted to promote community forestry. The Green Team has plans to begin tree give-a-ways to third grade students at the Arbor Day celebration.

Pamphlet Distribution

In concert with the Arbor Day Celebration, nature walks and tree planting programs the Green Team will distribute pamphlets or fliers promoting proper arboricultural care.



Maple Shade will apply to the National Arbor Day Foundation to become a Tree City USA in 2016.

Joseph Andl
Maple Shade Township Manager



STATEMENT OF TREE BUDGET

Annual Budget

The Township of Maple Shade ordinance establishing the Green Team states that “the Green Team shall have and exercise all of the powers and duties prescribed for such Teams by Subtitle:3 - NJSA 40:64, by general law and ordinance” Section 40:64-10 of this state statute indicates that during the month of December of each year, the Green Team shall certify to the Governing body the estimated sum necessary for the proper conduct of the work specified for the ensuring fiscal year. The budget is to include the sums estimated for the above in the lowest row.

Description	Activity	Costs	Total
<u>Parks Maintenance</u> Fertilizer & Weed Control Planting and Mulching	80 hours X 2 men	\$31.39/hour Includes 1 Dump truck	\$5,022.40
Brush Pickup \$31.39/hour/man Vehicle Cost Disposal Cost	416 hours X 2 men 97.39 Tons	\$31.39/hour Includes 1 Dump Truck \$30.00 per ton	\$26,116.48 \$2,921.70
Leaf Pickup Vehicle Cost	360 hours X 2 men	\$31.39/hour Includes 1 Dump Truck	\$22,600.80
Christmas Tree Pickup Vehicle Cost	40 hours X 2 men	\$31.39/hour Includes 1 Dump Truck	\$2,511.20
Fuel Cost	2 Gal. per hour	\$3.50/gallon	\$6,272.00
Green Team and others volunteer Time 189 Hours	Green Team mtgs. and tree planting	\$21.40/hour	\$4,044.60
TOTAL			\$69,489.18



This budget is a critical source of monetary funding for Green Team activities. In past years the Township Council has provided additional funds to match State grants to further expand available funding.

As the Commission implements the goals and objectives of this plan, future budgets will be submitted to implement the intended programs, supplemented by grants, donations and volunteer resources.

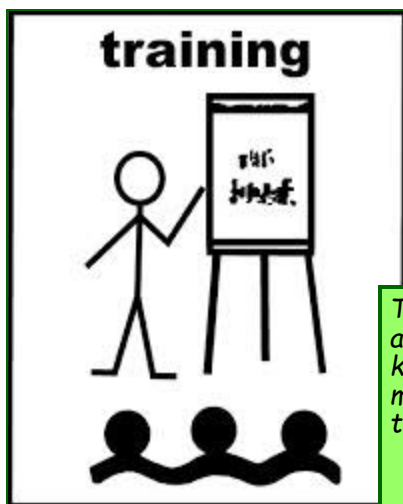
Volunteer Resources

The Green Team will provide significant volunteer hours towards meeting the objectives and goals of the CFMP. The Green Team recognizes the power that the process of fostering and working with volunteers can provide. Community Forestry programs that provide training to GT volunteers are vitally important to assist towns in building the capacity of their shade tree programs. Volunteer activities will continue as a major part of the Green Teams efforts to implement its goals and manage the community forest resource.

Grants and Donations

Implementation of this the first Community Forestry Management Plan will allow Maple Shade Township to begin to seek grants through Community Forestry's CSIP program to assist in the implementation of the goals contained in the plan. The Green Team hopes to become successful in obtaining CSIP grants in future and will apply when they become available and Maple Shade Township is eligible.

Beyond applying for monetary grants the Green Team wishes to stay current with advances in the arboriculture and forestry science fields. The commission will seek training opportunities that further that objective and seek funding to pursue that training.



The training provided volunteer Green Teamers at the annual NJ Shade Tree Federation Meeting is invaluable in helping keep our volunteer "Team" up to date with current science, motivated, and aware of funding opportunities to help our town manage the community forest.

*Lou Manchello
Mayor and Green Team Chairman, Maple Shade Township*



STATEMENT OF PLAN IMPLEMENTATION (2016-2020)

- 1. Review the Township's tree related ordinances. (2016)**
 - ◆ Review the ordinance involving a homeowners responsibility for trees within the Right-of-way. (ROW)
 - ◆ Review the remainder of the municipal ordinances that relate to trees.
 - ◆ Seek clarification in the ordinance regarding the ROW and tree replacement
 - ◆ Establish a compensation for tree removal ordinance
- 2. Increase the forest canopy and maintain the community forest resource. (2016-2020)**
 - ◆ Explore the uses for the newly established Shade Tree Fund. (2017)
 - ◆ Diversify the tree plantings and species composition.
 - ◆ Establish a fruit tree grove on Municipal Open Space.
 - ◆ Identify and raise awareness of any threats in a timely manner (insects, disease, invasives) and take all actions possible.
- 3. Strengthen the presence of the GT on the Municipal website. (2016)**
 - ◆ Post the ordinance in a prominent location on the Township website.
 - ◆ Link appropriate factsheets and educational articles to the Township's website.
- 4. Improve communication between the Township tree related activities and the Green Team. (2016-2020)**
 - ◆ Request the Green Team be informed whenever a tree is being removed/pruned by a homeowner in the ROW.
 - ◆ Develop a closer relationship with DPW and Community Development.
- 5. Increase Community Outreach. (2016-2020)**
 - ◆ Educate homeowners on the benefits of trees
 - ◆ Provide a stronger presence to the Township Schools.
- 6. Initiate a Township wide tree risk assessment as part of an I-tree inventory (2016-2020)**
 - ◆ Complete an I-tree inventory for Maple Shade
 - ◆ Include a tree risk assessment as part of that I-tree inventory.
 - ◆ Establish a priority treatment plan to reduce risk
 - ◆ Determine the effectiveness of whole program.
 - ◆ Write a CSIP grant for the inventory and risk assessment.



Maple Shade Township Tree Canopy Cover:

Maple Shade Township currently has a tree canopy of 25%.¹ and has a desire to increase the tree canopy. This year in pursuit of that goal Maple Shade Township will plant 20 trees on public land. These 20 trees will increase the number of trees in the Maple Shade Township tree canopy to help reach the 40% goal throughout the Township.

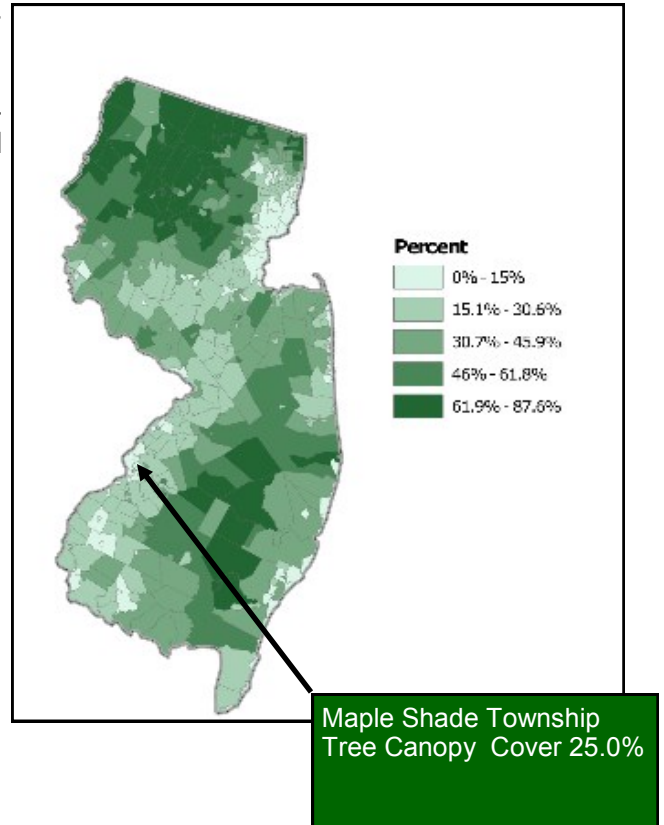
There are 42.65 miles of roadway in Maple Shade X 5,280 feet per mile X both sides of the street = 450,384 feet of Municipal Streets divided by 50 foot spacing for street trees = potential street tree population of 9007 trees.

9007 trees X vacancy factor of .43 (driveways, inter-sections, bordering streets and vacancies) = estimated street tree population of 3873 trees.

3873 (Estimated Existing Tree Population) = approximately 25% tree canopy along streets

American Forests recommends a tree canopy of 40% (east of the Mississippi) a population of 6197 trees. Maple Shade Township would need to plant 232 trees/year over the next 10 years to meet this goal of a 40% tree canopy on public lands.

To reach this goal Maple Shade will plant what trees it can on public lands and encourage additional plantings on private lands to increase the canopy level to the American Forests recommended level for towns in the Northeast.



1. *Urban Forest Data for New Jersey*, David Nowak, Eric Greenfield, GTR-NRS #47, USDA-Forest Service, Newtown Square,



COMMUNITY STEWARDSHIP INCENTIVE PROGRAM

The following is a summary of how each of the thirteen Community Stewardship Incentive Program (CSIP) practices is addressed by this Community Forestry Management Plan.

CSIP #1: Training

This practice is addressed on page 14.

CSIP #2: Community Forestry Ordinance Establishment

This practice is addressed on page 4.

CSIP #3: Public Education and Awareness

This practice is addressed in section 9.0 Tree inventory, on pages 14-16.

CSIP #4: Arbor Day

This practice is addressed on page 14.

CSIP #5: Tree Inventory

This practice is addressed on page 8.

CSIP #6: Tree Risk Assessment

This practice is addressed on page 8.

CSIP #7: Storm Damage Assessment

This practice is addressed on page 8.

CSIP #8: Tree Maintenance and Removals

This practice is addressed on pages 8,9,11.

CSIP #9 Insect and Disease Management

This practice is addressed on pages 9, 11.

CSIP #10: Wildfire Protection

This practice is addressed on page 8.

CSIP #11: Tree Planting

This practice is addressed on pages 5,8,14,15, and 18.

CSIP #12: Tree Recycling

This practice is addressed on page 15.

CSIP #13: Sidewalk Maintenance Problem

This practice is addressed on page 8.

CSIP #14: Stormwater Management

This practice is addressed on page 8.

CSIP #15: Other: *Tree Canopy Cover and Goal*

This practice is addressed on page 18.



Appendix

1. Green Team Ordinance of the Township of Maple Shade
2. Ordinances Affecting Shade Trees
3. Shade Tree Job Request Form



Maple Shade Township—Gazebo in Winter



Appendix 1

Maple Shade Tree Related Ordinances

Green Team Establishment: Adopted by the Township Council of the Township of Maple Shade 4-25-2013 by Ord. No. 2013-04.

17-1 - Creation of committee.

There is hereby created an advisory committee on sustainable practices which shall be known as Maple Shade Green Team.

17-2 - Mission.

The Green Team will assist the Township Council in outlining the long- and short-term goals for Maple Shade to improve and preserve the three elements of a sustainable community: environment, society and economy and will recommend strategies for implementing measures to meet these goals.

17-3 - Membership; terms.

A. The Green Team shall consist of seven regular voting members, and five nonvoting members. The regular voting members shall be residents of Maple Shade with the exception that one voting member may be a nonresident if said member has a business interest in Maple Shade.

1. The regular voting members shall include a member of the Board of Education or staff member or student of the Maple Shade school system.
2. The four nonvoting members shall include:
 - ◆ The Township Manager;
 - ◆ The Mayor;
 - ◆ The Township Community Development Director; and
 - ◆ The Planning Board Engineer, Township Engineer or Environmental Consultant.

B. The terms of the initial appointments for the voting members shall not exceed three years and shall be staggered; thereafter, all voting members shall be appointed for one-year terms. The non-voting members shall serve for one-year terms.

C. The Green Team may establish subcommittees as it deems necessary or as requested by the Township Council.

D. The committee shall have the right to appoint nonvoting members with special abilities and expertise.



17-4 - Powers and duties.

The Green Team shall:

- A. Initiate and encourage resident participation in forums to discuss what a sustainable community is and what issues most impact Maple Shade.
- B. Research and analyze green initiatives which make practical environmental and financial sense.
- C. Develop strategies for sustainable green initiatives in municipal operations and in community development.
- D. Annually submit a report to the Township Council by December 31 of each year to include:
 - ◆ A proposed schedule and procedure for a program of Township forums to educate the public about sustainable communities and the related processes;
 - ◆ Identification of existing community programs and resources which lend to the development of the sustainability program.
 - ◆ Identification of activities and projects of the Green Team within the past year.
- E. Collaborate with Township employees, service providers and other governmental agencies to share resource information and ideas consistent with the purpose of the Green Team.
- F. Undertake on behalf of and/or recommend to the Township Council any other advisory, educational or informational functions as will enhance the sustainability of the Township.

17-5 - Procedures.

- A. The Township Council shall annually appoint a Chairperson. Three members shall constitute the required quorum to conduct business.
- B. The Green Team shall elect officers from among its membership at an annual meeting and shall establish rules and procedures for its membership.
- C. The Green Team Secretary shall be responsible for the preparation of meeting minutes and shall file copies of approved minutes of meetings with the Township Clerk.
- D. The Green Team shall obtain its legal counsel from the Township Attorney.



Appendix 2 Additional Tree Related Ordinances

ARTICLE II - Township Council

4-3 General Powers...

.....
E. Shade tree program. The Township Council shall maintain a suitable shade tree program for the Township of Maple Shade, said program to include, but not be limited to, the selection, planting, care, control, trimming and improvement of shade and ornamental trees and shrubbery upon and in the streets, highways, public places and parks within the Township.

Editor's Note: See also § 4-36, Shade Tree Advisory Board....

Editor's Note: Former § 4-37, Shade Tree Advisory Board, was repealed 12-11-2014 by Ord. No. 2014-22. This ordinance also provided for the renumbering of former §§ 4-38 through 4-43 as §§ 4-37 through 4-42.

ARTICLE VI - Department of Public Works

4-20 - Public property.

The Department of Public Works Shall:

- A. Care for all playgrounds and Township-owned or -leased grounds, including the trees, lawns and landscaping appurtenant to Township-owned or -leased buildings, and the recreational areas and facilities.
- B. Provide for the pruning, trimming, removal and planting of shade trees in the streets and all other public places.
- C. Provide custodial and janitorial services for all Township-owned or leased buildings.
- D. Operate and maintain Township-owned properties, including tax-foreclosed property.

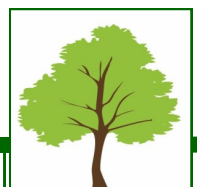
For More information on tree related ordinances

<http://www.mapleshade.com/about-us/>

Under Tab "Municipal Code".

Ordinance 178-15 Design Requirements for Subdivisions

<http://ecode360.com/search/MA0445?query=trees>



Appendix 3

Additional Tree Related Ordinances may be found online at:

<http://www.mapleshade.com/about-us/>

Under Tab “Municipal Code”.

Ordinance 178-15 Design Requirements for Subdivisions

<http://ecode360.com/search/MA0445?query=trees>



TREE SERVICE REQUEST FORM

Resident Name	Date	Address	Reason for Contact

Referred to:	
Work Performed	
Date Completed	
Notes	

